

CEL (California Eastern Laboratories)

PS9307L2-AX

Part Number:	PS9307L2-AX
Manufacturer/Brand:	CEL (California Eastern Laboratories)
Product description:	OPTOISO 5KV 1CH GATE DRIVER 6SMD
Datasheets:	1.PS9307L2-AX.pdf 2.PS9307L2-AX.pdf 3.PS9307L2-AX.pdf 4.PS9307L2-AX.pdf
RoHS Status:	Lead free / RoHS Compliant
Stock Condition:	5587 pcs stock
Ship From:	Hong Kong
Shipment Way:	DHL/Fedex/TNT/UPS/EMS

REQUEST FOR QUOTATION

Laboratories)

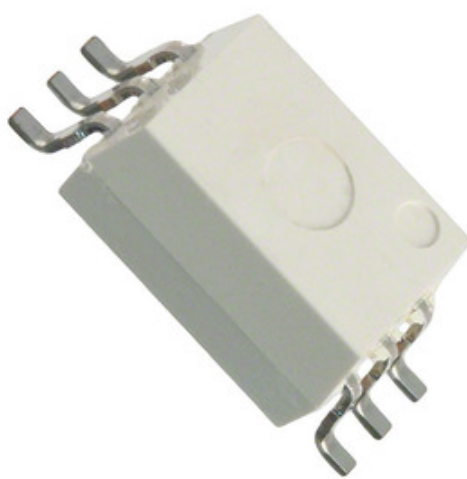


Image may be representation. See specifications for product details.

Specifications of PS9307L2-AX

PART NUMBER	PS9307L2-AX
MANUFACTURER	CEL (California Eastern Laboratories)
DESCRIPTION	OPTOISO 5KV 1CH GATE DRIVER 6SMD
LEAD FREE STATUS / ROHS STATUS	Lead free / RoHS Compliant
QUANTITY AVAILABLE	5587 pcs
DATA SHEET	1.PS9307L2-AX.pdf 2.PS9307L2-AX.pdf 3.PS9307L2-AX.pdf 4.PS9307L2-AX.pdf
VOLTAGE - SUPPLY	10 V ~ 30 V
VOLTAGE - ISOLATION	5000Vrms
VOLTAGE - FORWARD (VF) (TYP)	1.56V
TECHNOLOGY	Optical Coupling
SUPPLIER DEVICE PACKAGE	6-SMD
SERIES	NEPOC
RISE / FALL TIME (TYP)	30ns, 30ns
PULSE WIDTH DISTORTION (MAX)	90ns
PROPAGATION DELAY TPLH / TPHL (MAX)	175ns, 175ns
PACKAGING	Bulk
PACKAGE / CASE	6-SOIC (0.268", 6.80mm Width)
OPERATING TEMPERATURE	-40°C ~ 125°C
NUMBER OF CHANNELS	1
MOUNTING TYPE	Surface Mount
MOISTURE SENSITIVITY LEVEL (MSL)	1 (Unlimited)
LEAD FREE STATUS / ROHS STATUS	Lead free / RoHS Compliant
DETAILED DESCRIPTION	600mA Gate Driver Optical Coupling 5000Vrms 1 Channel 6-SMD
CURRENT - PEAK OUTPUT	600mA
CURRENT - OUTPUT HIGH, LOW	400mA, 400mA
CURRENT - DC FORWARD (IF) (MAX)	25mA
COMMON MODE TRANSIENT IMMUNITY (MIN)	50kV/μs
APPROVALS	CSA, SEMKO, UL

Related Tags

CEL (California Eastern Laboratories) PS9307L2-AX	PS9307L2-AX Distributor	PS9307L2-AX Supplier
PS9307L2-AX Price	PS9307L2-AX Pictures	PS9307L2-AX Image
PS9307L2-AX PDF Datasheet	PS9307L2-AX Download Datasheet	PS9307L2-AX Datasheet
PS9307L2-AX Stock	Buy PS9307L2-AX	Buy CEL (California Eastern Laboratories) PS9307L2-AX
CEL (California Eastern Laboratories) PS9307L2-AX	CEL (California Eastern Laboratories) Supplier	CEL (California Eastern Laboratories) Distributor
CEL (California Eastern Laboratories) PS9307L2-AX	California Eastern Labs PS9307L2-AX	California Eastern Laboratories PS9307L2-AX
CEL PS9307L2-AX	CEL (California Eastern Laboratories) PS9307L2-AX	

Related Products

<p>PS9308L-AX Manufacturers: Renesas Electronics America Description: OPTOISO 5KV 1CH GATE DRVR 6SDIP In stock: 44861 pcs RFQ</p>	<p>PS9307L-E3-AX Manufacturers: CEL (California Eastern Laboratories) Description: OPTOISO 5KV 1CH GATE DRVR 6SDIP In stock: 4092 pcs RFQ</p>
<p>PS9307L2-E3-AX Manufacturers: Renesas Electronics America Description: OPTOISO 5KV 1CH GATE DRIVER 6SMD In stock: 44700 pcs RFQ</p>	<p>PS9307L2-E3-AX Manufacturers: CEL (California Eastern Laboratories) Description: OPTOISO 5KV 1CH GATE DRIVER 6SMD In stock: 2851 pcs RFQ</p>
<p>PS9307L2-AX Manufacturers: Renesas Electronics America Description: OPTOISO 5KV 1CH GATE DRIVER 6SMD In stock: 33367 pcs RFQ</p>	<p>PS9308L-AX Manufacturers: CEL (California Eastern Laboratories) Description: OPTOISO 5KV 1CH GATE DRVR 6SDIP In stock: 3645 pcs RFQ</p>
<p>PS9308L-E3-AX Manufacturers: Renesas Electronics America Description: OPTOISO 5KV 1CH GATE DRVR 6SDIP In stock: 73506 pcs RFQ</p>	<p>PS9307L-AX Manufacturers: CEL (California Eastern Laboratories) Description: OPTOISO 5KV 1CH GATE DRVR 6SDIP In stock: 5580 pcs RFQ</p>
<p>PS9307L-V-E3-AX Manufacturers: Renesas Electronics America Description: OPTOISO 5KV 1CH GATE DRVR 6SDIP In stock: 58702 pcs RFQ</p>	<p>PS9307L-AX Manufacturers: Renesas Electronics America Description: OPTOISO 5KV 1CH GATE DRVR 6SDIP In stock: 34633 pcs RFQ</p>
<p>PS9307L-E3-AX Manufacturers: Renesas Electronics America Description: OPTOISO 5KV 1CH GATE DRVR 6SDIP In stock: 50874 pcs RFQ</p>	<p>PS9307L-V-E3-AX Manufacturers: CEL (California Eastern Laboratories) Description: OPTOISO 5KV 1CH GATE DRVR 6SDIP In stock: 3269 pcs RFQ</p>