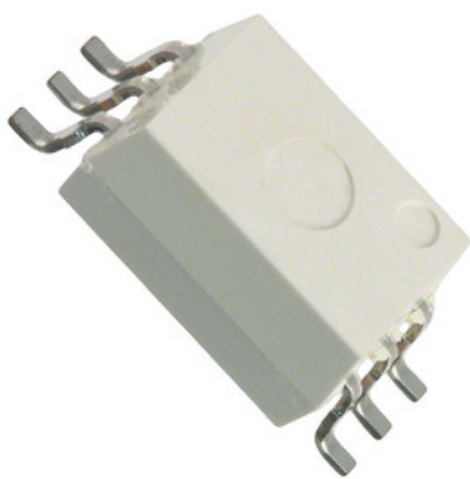




CEL (California Eastern

Laboratories)



PS9308L-AX

Part Number:	PS9308L-AX
Manufacturer/Brand:	CEL (California Eastern Laboratories)
Product description:	OPTOISO 5KV 1CH GATE DRVR 6SDIP
Datasheets:	1.PS9308L-AX.pdf 2.PS9308L-AX.pdf 3.PS9308L-AX.pdf
RoHS Status:	Lead free / RoHS Compliant
Stock Condition:	3645 pcs stock
Ship From:	Hong Kong
Shipment Way:	DHL/Fedex/TNT/UPS/EMS

[REQUEST FOR QUOTATION](#)

Image may be representation. See specifications for product details.

Specifications of PS9308L-AX

PART NUMBER	PS9308L-AX
MANUFACTURER	CEL (California Eastern Laboratories)
DESCRIPTION	OPTOISO 5KV 1CH GATE DRVR 6SDIP
LEAD FREE STATUS / ROHS STATUS	Lead free / RoHS Compliant
QUANTITY AVAILABLE	3645 pcs
DATA SHEET	1.PS9308L-AX.pdf 2.PS9308L-AX.pdf 3.PS9308L-AX.pdf
VOLTAGE - SUPPLY	15 V ~ 30 V
VOLTAGE - ISOLATION	5000Vrms
VOLTAGE - FORWARD (VF) (TYP)	1.56V
TECHNOLOGY	Optical Coupling
SUPPLIER DEVICE PACKAGE	6-SDIP
SERIES	-
RISE / FALL TIME (TYP)	50ns, 50ns
PULSE WIDTH DISTORTION (MAX)	100ns
PROPAGATION DELAY TPLH / TPHL (MAX)	250ns, 250ns
PACKAGING	Bulk
PACKAGE / CASE	6-SOIC (0.268", 6.80mm Width)
OPERATING TEMPERATURE	-40°C ~ 110°C
NUMBER OF CHANNELS	1
MOUNTING TYPE	Surface Mount
MOISTURE SENSITIVITY LEVEL (MSL)	1 (Unlimited)
LEAD FREE STATUS / ROHS STATUS	Lead free / RoHS Compliant
DETAILED DESCRIPTION	2A Gate Driver Optical Coupling 5000Vrms 1 Channel 6-SDIP
CURRENT - PEAK OUTPUT	2A
CURRENT - OUTPUT HIGH, LOW	1.5A, 1.5A
CURRENT - DC FORWARD (IF) (MAX)	25mA
COMMON MODE TRANSIENT IMMUNITY (MIN)	25kV/μs
APPROVALS	CSA, SEMKO, UL

Related Tags

CEL (California Eastern Laboratories) PS9308L-AX	PS9308L-AX Distributor	PS9308L-AX Supplier
PS9308L-AX Price	PS9308L-AX Pictures	PS9308L-AX Image
PS9308L-AX PDF Datasheet	PS9308L-AX Download Datasheet	PS9308L-AX Datasheet
PS9308L-AX Stock	Buy PS9308L-AX	Buy CEL (California Eastern Laboratories) PS9308L-AX
CEL (California Eastern Laboratories) PS9308L-AX	CEL (California Eastern Laboratories) Supplier	CEL (California Eastern Laboratories) Distributor
CEL (California Eastern Laboratories) PS9308L-AX	California Eastern Labs PS9308L-AX	California Eastern Laboratories PS9308L-AX
CEL PS9308L-AX	CEL (California Eastern Laboratories) PS9308L-AX	

Related Products

<p>PS9307L2-E3-AX Manufacturers: CEL (California Eastern Laboratories) Description: OPTOISO 5KV 1CH GATE DRIVER 6SMD In stock: 2851 pcs RFQ</p>	<p>PS9308L-E3-AX Manufacturers: CEL (California Eastern Laboratories) Description: OPTOISO 5KV 1CH GATE DRVR 6SDIP In stock: 6602 pcs RFQ</p>
<p>PS9308L-V-AX Manufacturers: Renesas Electronics America Description: OPTOISO 5KV 1CH GATE DRVR 6SDIP In stock: 47548 pcs RFQ</p>	<p>PS9308L-AX Manufacturers: Renesas Electronics America Description: OPTOISO 5KV 1CH GATE DRVR 6SDIP In stock: 44861 pcs RFQ</p>
<p>PS9308L2-AX Manufacturers: Renesas Electronics America Description: OPTOISO 5KV 1CH GATE DRVR 6SDIP In stock: 46515 pcs RFQ</p>	<p>PS9308L-V-AX Manufacturers: CEL (California Eastern Laboratories) Description: OPTOISO 5KV 1CH GATE DRVR 6SDIP In stock: 4377 pcs RFQ</p>
<p>PS9307L2-E3-AX Manufacturers: Renesas Electronics America Description: OPTOISO 5KV 1CH GATE DRIVER 6SMD In stock: 44700 pcs RFQ</p>	<p>PS9307L2-AX Manufacturers: CEL (California Eastern Laboratories) Description: OPTOISO 5KV 1CH GATE DRIVER 6SMD In stock: 5587 pcs RFQ</p>
<p>PS9308L-E3-AX Manufacturers: Renesas Electronics America Description: OPTOISO 5KV 1CH GATE DRVR 6SDIP In stock: 73506 pcs RFQ</p>	<p>PS9308L2-AX Manufacturers: CEL (California Eastern Laboratories) Description: OPTOISO 5KV 1CH GATE DRVR 6SDIP In stock: 5689 pcs RFQ</p>
<p>PS9307L2-AX Manufacturers: Renesas Electronics America Description: OPTOISO 5KV 1CH GATE DRIVER 6SMD In stock: 33367 pcs RFQ</p>	<p>PS9307L-V-E3-AX Manufacturers: CEL (California Eastern Laboratories) Description: OPTOISO 5KV 1CH GATE DRVR 6SDIP In stock: 3269 pcs RFQ</p>

