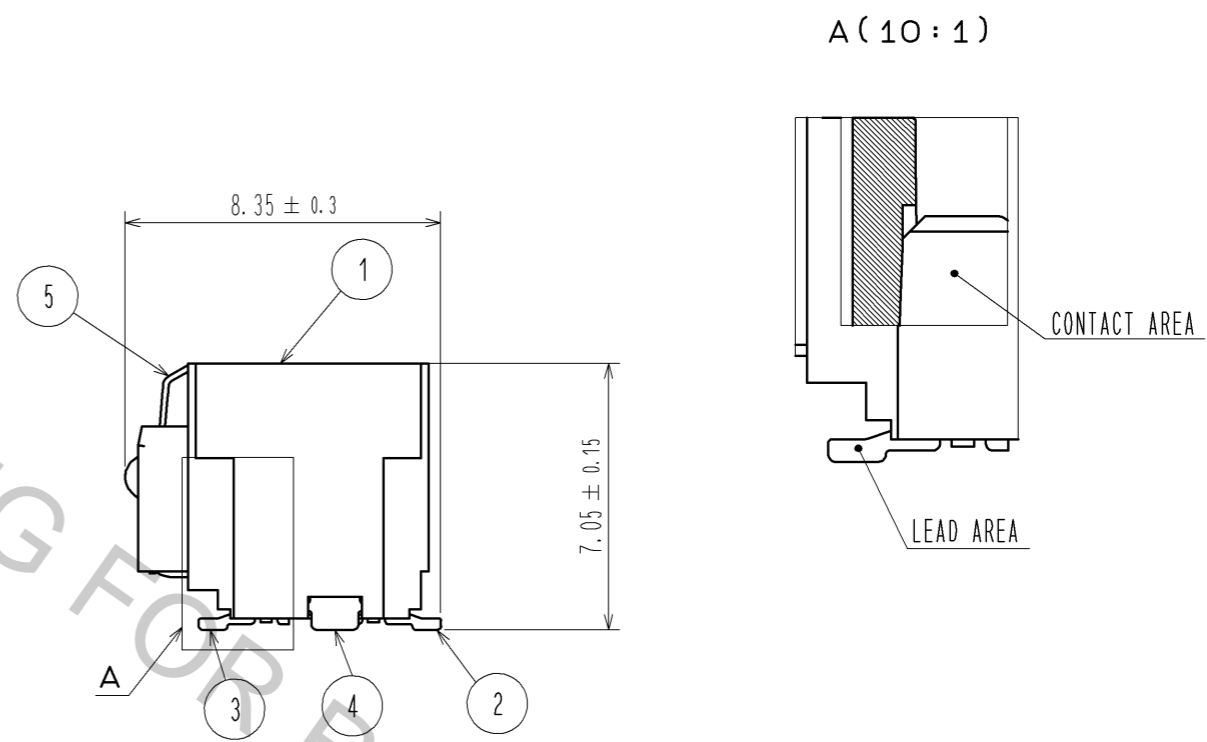
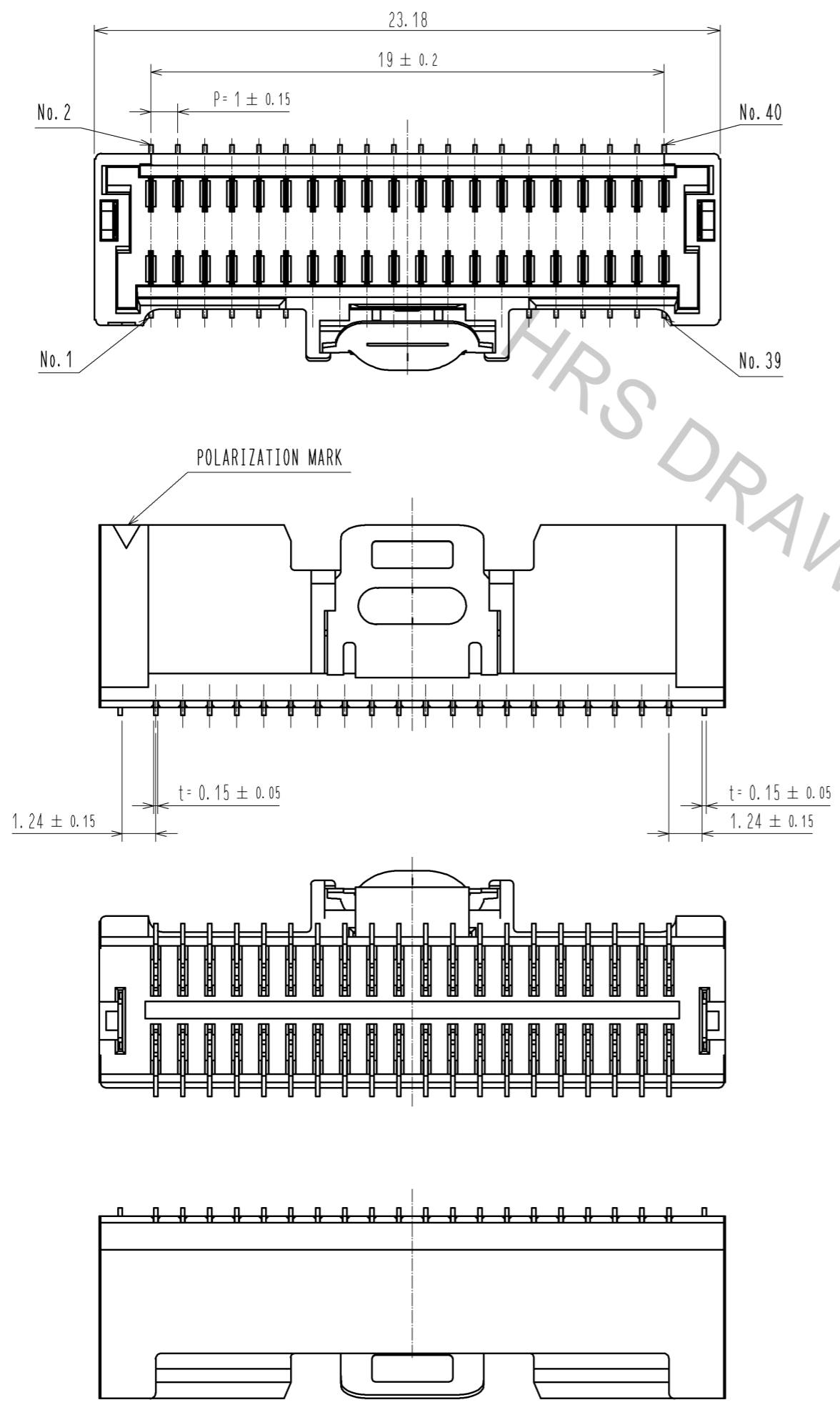


Apr.1.2017 Copyright 2017 HIROSE ELECTRIC CO., LTD. All Rights Reserved.

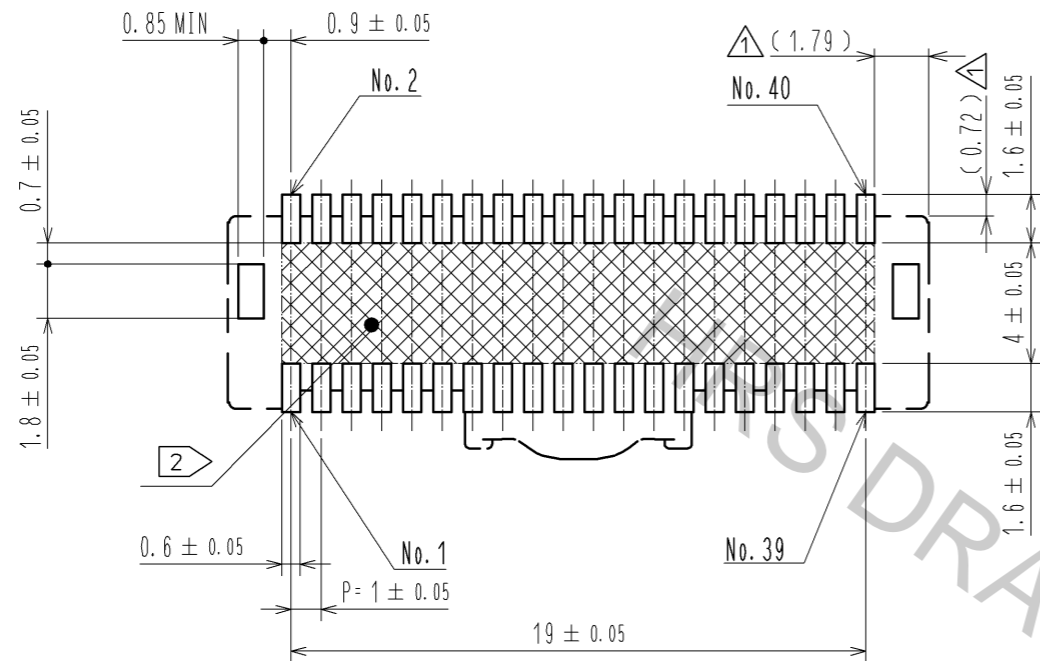


- NOTES
1. LEAD CO-PLANARITY SHALL BE 0.1 mm MAX.
 2. AREA INDICATED MUST BE FREE OF CONDUCTIVE TRACES OR THE CONDUCTIVE TRACES MUST BE COVERED BY RESIST FILM.
 3. PLEASE CONSULT HIROSE WHEN THE PRODUCT IS MOUNTED TO EPC.

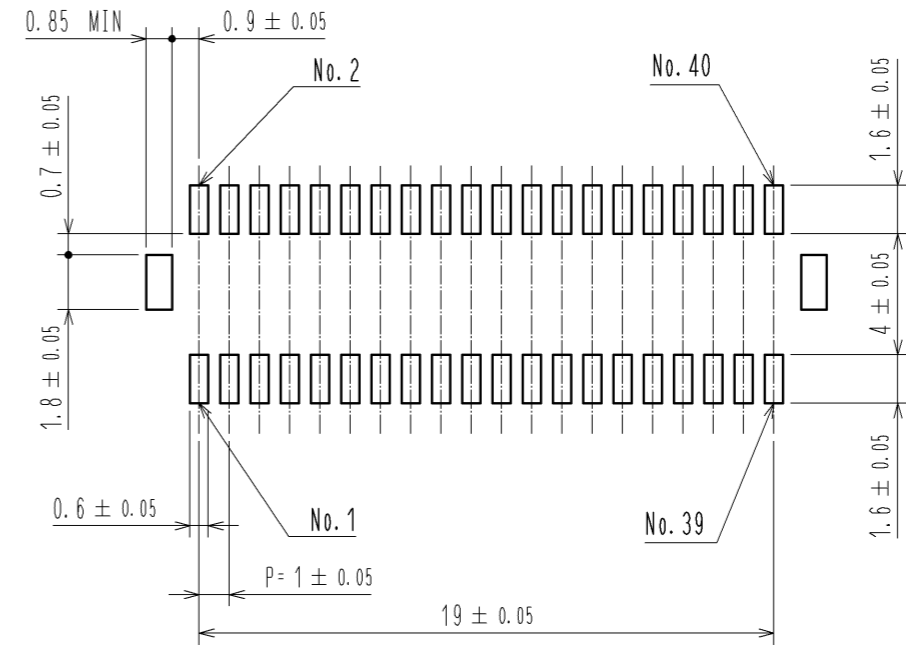
3	BRASS	CONTACT AREA : Au PLATING 0.05µm MIN.	9	POLYAMIDE	VACUUM CAP
		LEAD AREA : Au PLATING 0.05µm MIN.	8	PS	REEL, BLACK
		UNDERPLATING : Ni PLATING 1µm MIN.	7	POLYESTER	CLEAR
2	BRASS	CONTACT AREA : Au PLATING 0.05µm MIN.	6	PS	CLEAR
		LEAD AREA : Au PLATING 0.05µm MIN.	5	STAINLESS STEEL	-
		UNDERPLATING : Ni PLATING 1µm MIN.	4	BRASS	SURFACE : Sn PLATING 1µm MIN. UNDERPLATING : Ni PLATING 0.5µm MIN.
1	LCP	BLACK, UL94V-0			
NO.	MATERIAL	FINISH . REMARKS	NO.	MATERIAL	FINISH . REMARKS
UNITS mm		SCALE FREE	COUNT 4	DESCRIPTION OF REVISIONS DIS-H-007735	
DESIGNED MI. SAKIMURA		CHECKED TS. KUMAZAWA		DATE 13. 03. 22	
APPROVED : KI. AKIYAMA 12. 06. 08		DRAWING NO. EDC3-324909-03			
CHECKED : HK. UMEHARA 12. 06. 08		PART NO. DF50-40DP-1V(52)			
DESIGNED : TT. OHSAKO 10. 05. 14		CODE NO. CL665-0005-9-52			
DRAWN : TT. OHSAKO 10. 05. 14					

Apr.1.2017 Copyright 2017 HIROSE ELECTRIC CO., LTD. All Rights Reserved.

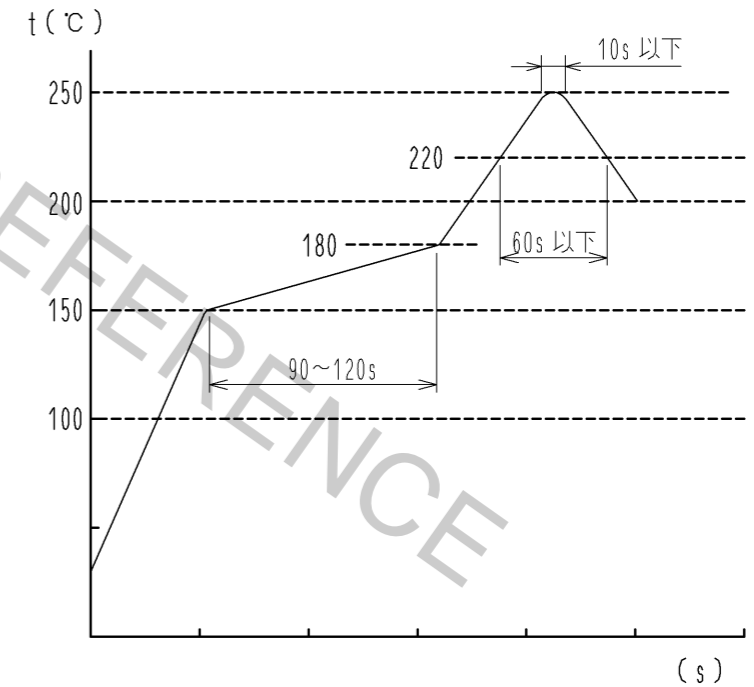
RECOMMENDED PCB LAYOUT
(MOUNTING SURFACE SIDE) (FREE)



RECOMMENDED METAL MASK (FREE)
THICKNESS : 0.1mm



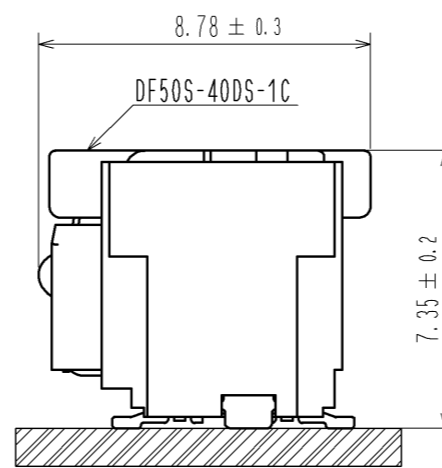
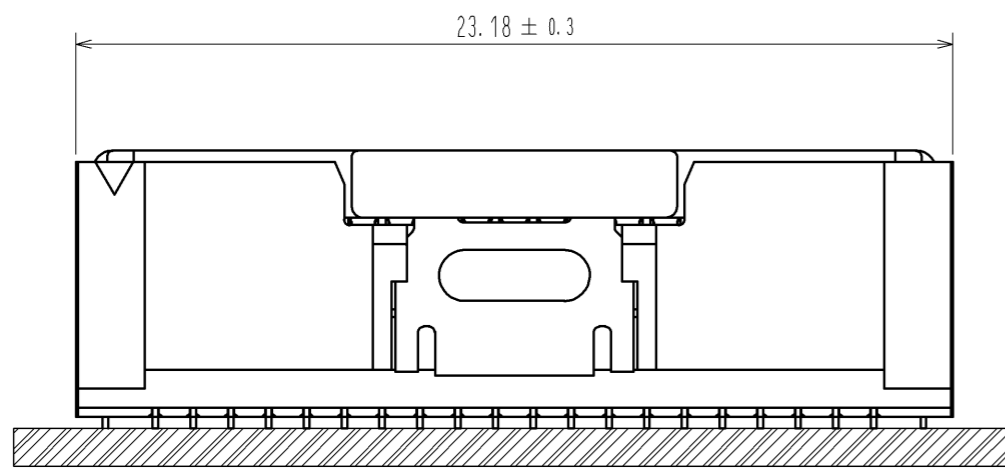
REFLOW TEMPERATURE PROFILE
USING LEAD-FREE SOLDER PASTE(REFERENCE)



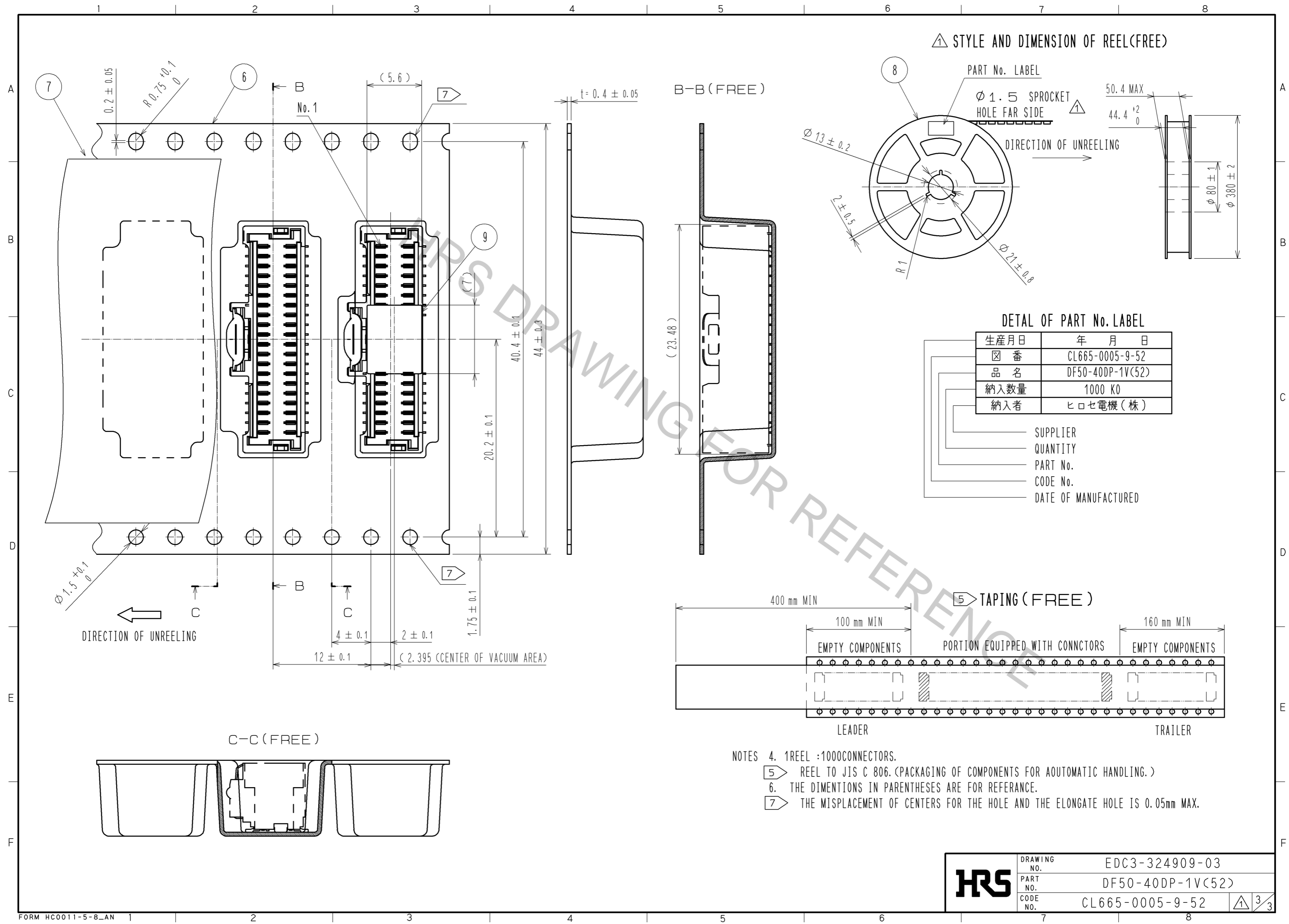
NUMBER OF REFLOW CYCLES : 2 CYCLES MAX.
THE TEMPERATURE OF THIS PROFILE IS MASURED ON THE LEAD TERMINAL.

WE RECOMMEND PERFORMING AN EVALUATION UNDER THE MOUNTING CONDITIONS YOU WILL BE USING BECAUSE IT COULD BE AFFECTED BY ANY CONDITION:TYPE OF SOLDER PASTE, SIZE OF PCB, MOUNTING METAL etc.

MATING FIGURE (5 : 1)



HRS	DRAWING NO.	EDC3-324909-03
	PART NO.	DF50-40DP-1V(52)
	CODE NO.	CL665-0005-9-52
		2/3



HRS	DRAWING NO.	EDC3-324909-03
	PART NO.	DF50-40DP-1V(52)
	CODE NO.	CL665-0005-9-52
		△ 3/3