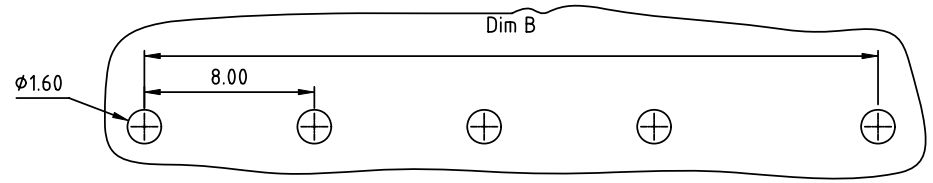
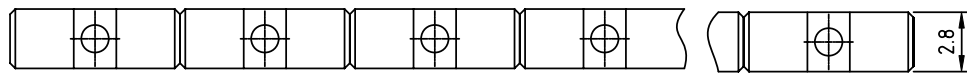
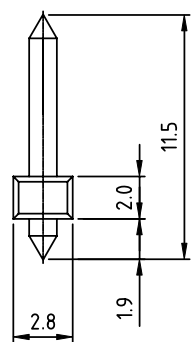
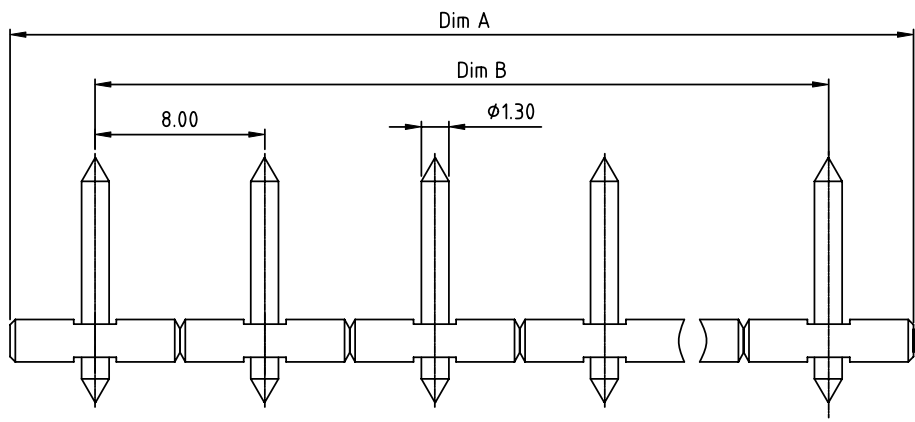


| | |
|----------------|---------|
| PRODUCT NUMBER | PITCH |
| OPxx63x000J0G | 8.00 mm |



RECOMMENDED P.C.B LAYOUT
TOP VIEW



Material:

- Item Ⓐ Male contact pin: Brass (CuZn), Tin or Au plated.
- Item Ⓑ Terminal (housing): Thermoplastic (UL94V-0)

Electrical cULus

- Voltage rating: 300V
- Current rating: 10A
- Withstanding Voltage: 1.6KV
- Operating temperature: -40°C to +115°C
- Soldering temperature: 260°C±5°C/5 Sec

DIMENSION

| | |
|-------|-----------|
| Dim A | N×8.0 |
| Dim B | (N-1)×8.0 |

N = Number of poles

| Poles | Tolerance |
|---------|-----------|
| 2P-6P | ±0.15 |
| 7P-12P | ±0.20 |
| 13P-18P | ±0.30 |
| 19P-20P | ±0.40 |

PART NO.: OP xx 6 3 x 0 00J0 G

Solid block
 No. of poles
 02 2 poles
 03 3 poles

 20 20 poles

0 Tin plating 120u" Min
 1 Gold plating 10u"
 2 Gold flash

RoHS compliant
 (lead<4%)
 In copper Alloy

| | | | | | |
|-------------|----------------|-----------------------|-------------------------|---------------------------------------|---|
| mat'l. code | | surface ASME Y14.5 | tolerance ASME Y14.5 | projection MM | product family TERMINAL BLOCK |
| ltr | ecn no | dr | date | tolerances unless otherwise specified | title TERMINAL BLOCK PLUGGABLE SOCKET, VERTICAL |
| | | | | angles X°±1° | |
| | | | | scale | dwg no OPxx63x000J0G |
| | | dr | EVIN ZHONG | 041714 | sheet 1 of 1 |
| | | enr | EVIN ZHONG | 041714 | size A4 |
| | | chr | HANKE FENG | 041714 | type CUSTOMER Drawing |
| | | appd | SHI JUN | 041714 | |
| sheet index | revision sheet | A | 1 | | |